

## Trentham Station to Doctors Creek

Beginning from the heritage-listed railway station, follow the Swamp Wallaby's footprints to the western end of the platform, through the gate and down onto the old railway line.

In a matter of minutes you come to the first old wooden bridge, built in the late 1870s which crosses Stoney Creek. Just after the bridge, look to your left for the old Sunnyside Foundry, built in 1893 to produce the famous Trewhella car jack. After crossing the Falls Road you begin to notice the vegetation changing and although largely cleared, the dominant species of tree on this section of the walk *Manna Gum (Eucalyptus viminalis)*. Look out for the one on your left, thought to be several hundred years old.

Follow the grassy path alongside a stand of Radiata Pine before entering into an open forest of rough-barked Peppermints (*E. radiata*) and smooth-barked Mountain Gum (*E. dalympleana*). In the swampy, low-lying areas of the track, you can see Swamp Gums (*E. ovata*) and an understory of the Red-fruited Saw-sedge (*Garrnia sieberiana*).

Soon you will cross Bligh's Road and meander through more open forest before crossing a boardwalk over a swampy area. As you come up the rise, you will catch a glimpse of the old railway bridge that crosses Doctors Creek.

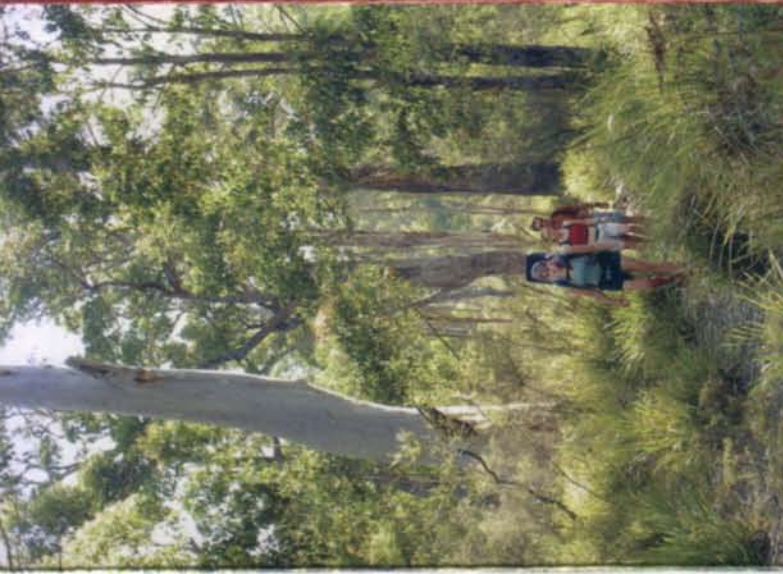
## The loop - Doctors Creek and return

Now roughly an hour's walk from the station, you step back onto the old railway line, where there is an information board telling you more about the area.

Pressing on, keep an eye out for Swamp Wallabies, Eastern Grey Kangaroos and Short-beaked Echidnas. The keen observer might be rewarded with the sight of a Koala, or the iridescent blue flash of the Sacred Kingfisher. Sun Orchids (*Thelymitra* sp.) and Greenhood Orchids (*Pterostylis* sp.) can be seen in this area during spring. Another 300 metres on you'll cross Blue Creek, where rich deposits of alluvial gold were found from the mid-1850s onwards.

By the time you have reached Domino Creek, you have not only reached the half-way point, but stand on an embankment which has a circular tunnel running through it crafted from bricks. Here you can also read the second information board. Watch for the left-hand turn leading off the embankment and follow the markers until you cross the wooden bridge over Domino Creek.

Continue along this old logging track through open forest back to the railway line. From here it is an hour walk, retracing your route back to the railway station.



in harmony with nature

## Looking after our forests

- All wildlife and native plants are protected by law. Please do not disturb them in any way.
- Please don't feed the animals.
- All dogs must be on a leash. Cats are not permitted.
- Firearms are not permitted.
- You must carry out all your rubbish, including those easy-to-forget items like silver paper, plastic wrappers and orange peel, which won't easily decompose.
- Let someone know before you go bushwalking. Tell them about your party, your route, when you plan to return and the equipment your party is carrying. Remember to contact them when you get back.

© Photos copyright Sandy Schellema and David Bryant.

Disclaimer: This publication may be of assistance to you but the authors and we do not guarantee that the publication is without of any kind or in whole or in part for your particular purposes and therefore disclaims all liability for any error, loss or any other consequence which may arise from you relying on any information in this publication.

## Domino trail

Distance: 10 km - 3 hours (gentle)

Located an hour's drive north-west of Melbourne is Trentham - a quiet, picturesque country town nestled amongst the tall timbers of the Wombat State Forest, through which the Domino trail meanders.

Over the centuries, many have passed through or called the area home, beginning with its original inhabitants, the Jaara-Jaara/Dja-Dja Wurruung people. The migration of European settlers to Trentham brought with it a rich history of mining, logging and potato farming.

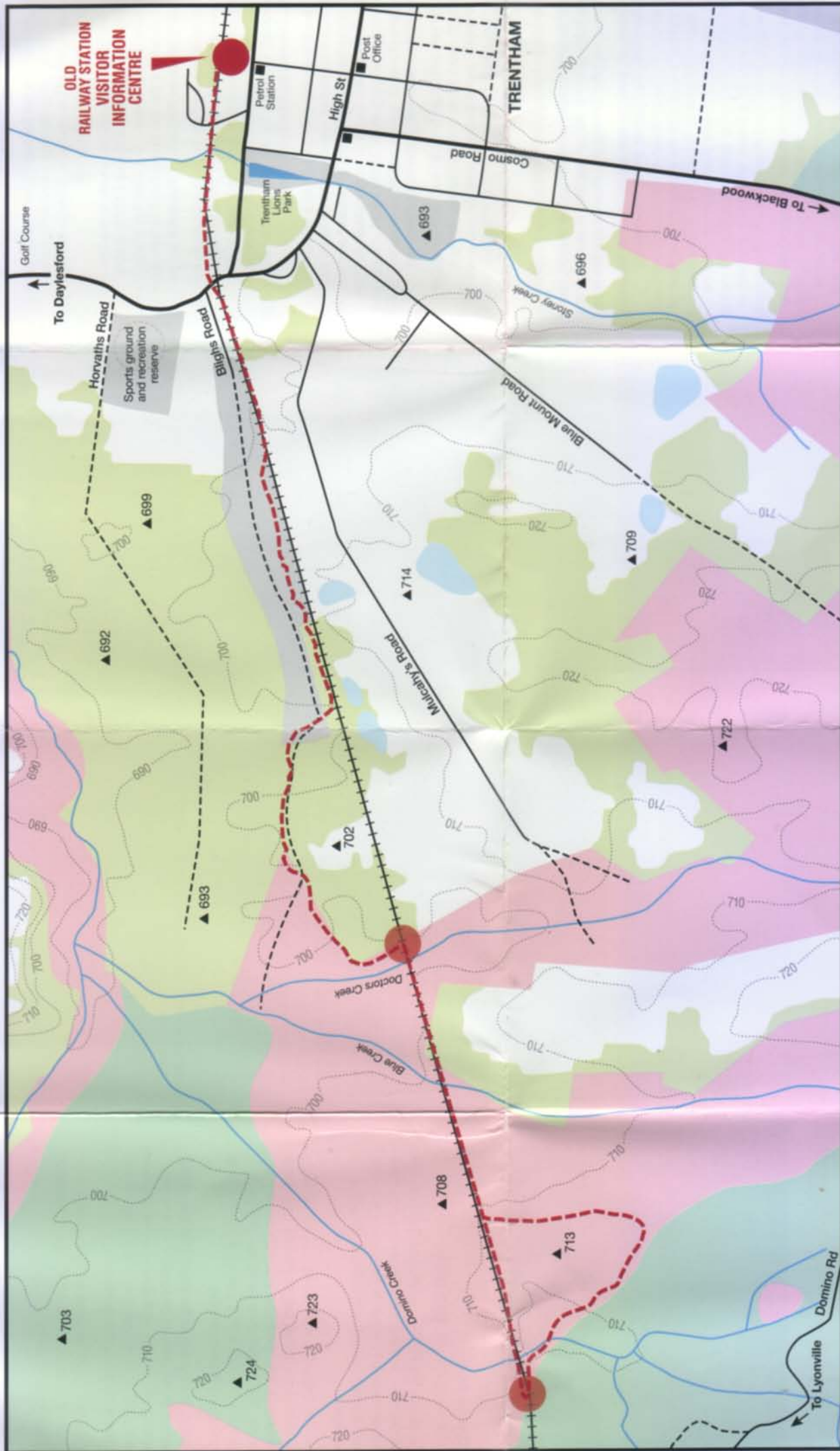
In 1998, the people of Trentham discovered that nearby forests were to be logged. As a result, the local community protested in order to protect the habitat of the endangered Powerful Owl and promote forest-based tourism.

By the year 2000, the area was proclaimed a Special Protection Zone, resulting in a cessation of logging in the area.



THE Domino trail  
TRENTHAM





- - - Walking track route
  - + + + Railway line
  - Sealed roads
  - - - Gravel roads
  - Water courses
  - - - Contour lines in metres
  - ▲ Spot heights (altitude in metres)
- 
- Special Protection Zone
  - General Forest Management Zone
  - Other public land
  - Private land
  - Forest cover
  - Buildings - landmarks

# THE Dominotrail

## TRENTHAM

